

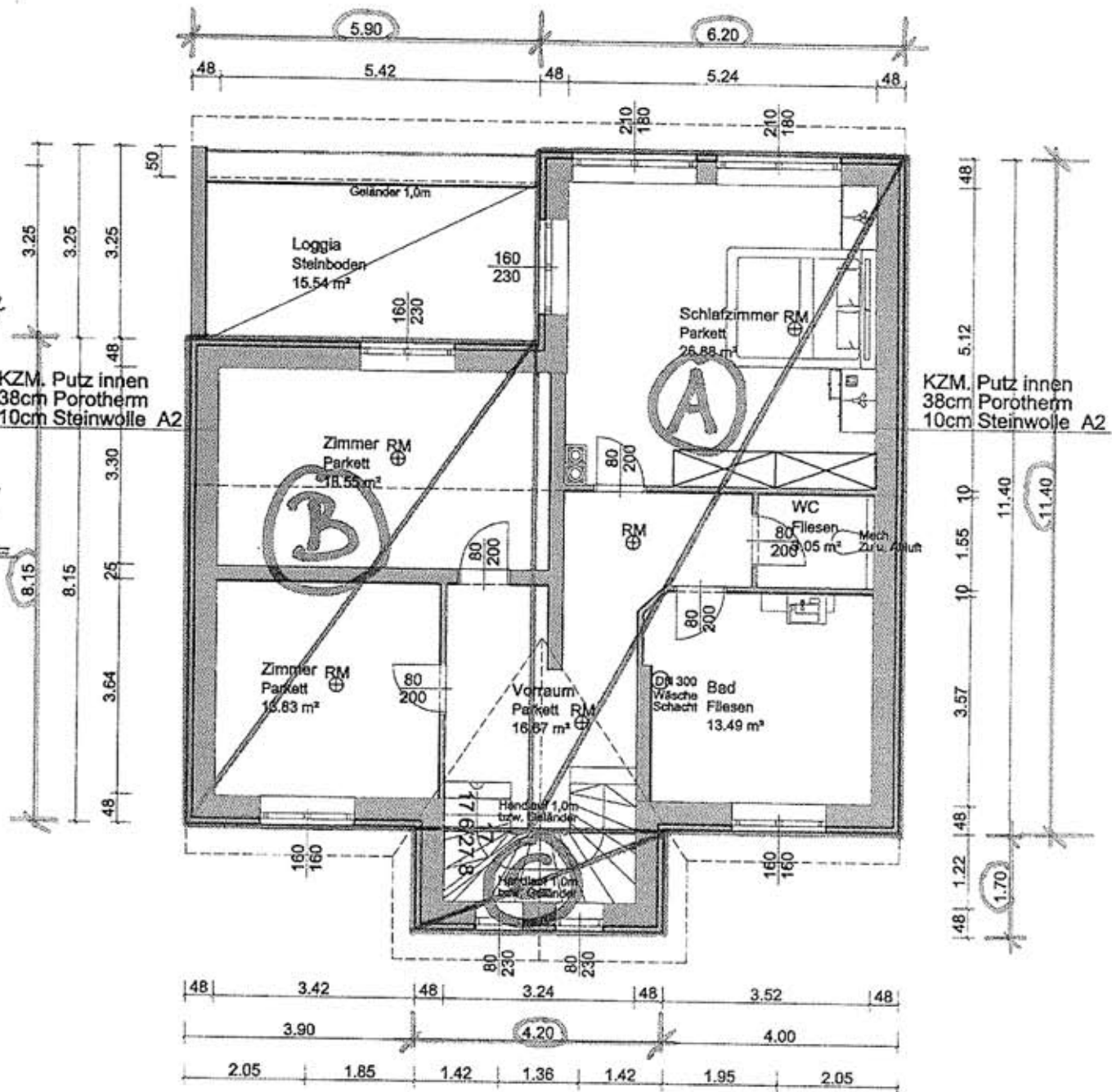
$$A = 6,20 \times 1,40 = 70,68 \text{ m}^2$$

$$B = 8,15 \times 5,90 = 48,09 \text{ m}^2$$

$$C = 4,20 \times 1,70 = 7,14 \text{ m}^2$$

$$125,91 \text{ m}^2$$

OG.



PROJEZIERTE DARSTELLUNG FÜR ORTSKERNZUSCHLAG $125,91 \text{ m}^2$